

COMPANY PROFILE



SEMBA COMPANY PROFILE

VISION & MISSION / BUSINESS FLOW / BUSINESS FIELD / ETHICAL & DIGITAL / NETWORK

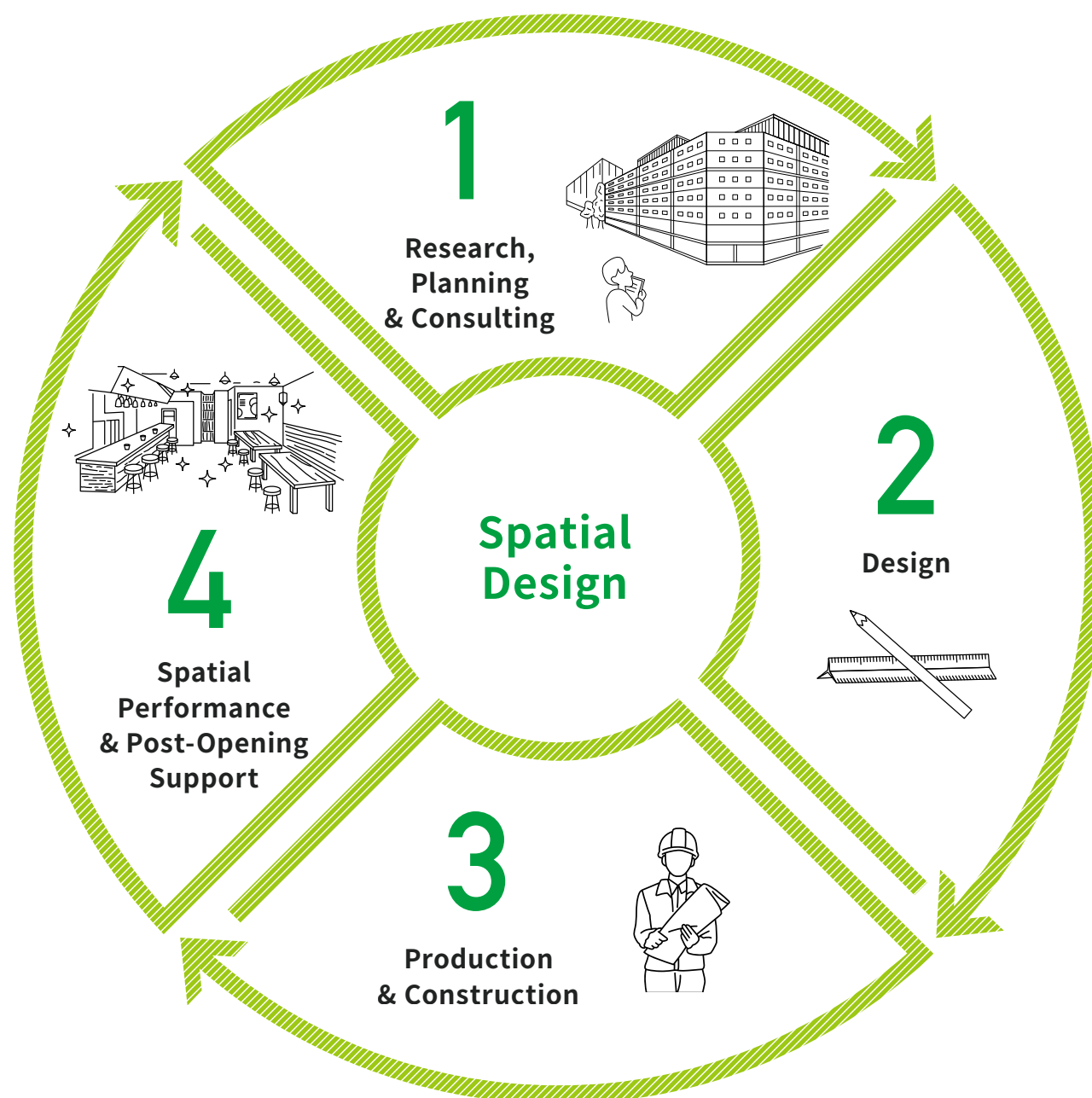


SEMBA *Good Ethical Company*

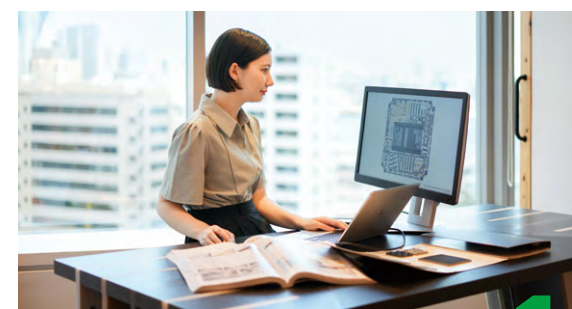


SEMBA COMPANY PROFILE

Business Flow



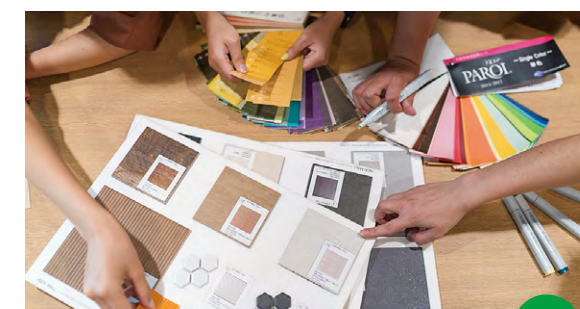
We provide a wide range of services related to spatial design, within Japan and overseas.



Research, Planning & Consulting

We conduct market research and analysis to maximize the potential of the location and propose our unique ideals and plans based on our expertise.

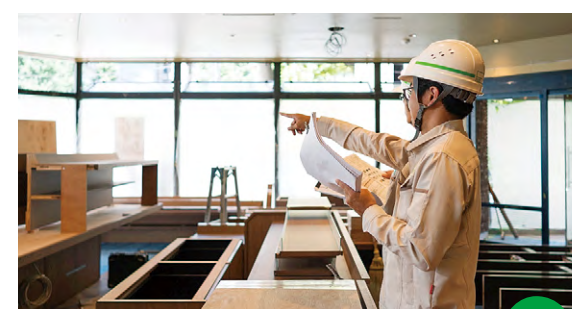
- Marketing & Research
- Development & Urban Planning Consulting
- Planning & Basic Concept-Making
- Branding
- Merchandise Planning & Tenant Leasing



Design

We focus on creating designs that are not only comfortable, functional, and aesthetically pleasing for users but also ethically correct and future-friendly, through the Ethical Design, considering for the people, community, and environment.

- Basic Planning
- Concept-Making
- Basic Design-& Working Drawings
- Signage, Logo & Graphic Planning
- Spatial Performance (planting, art, display, etc.)



Production & Construction

In cooperation with nationwide partner companies, we promote safe and secure construction in accordance with plans and designs with a zero-waste approach that does not waste resources.

- Design Supervision
- Construction Management & Site Supervision
- Various Construction, Furniture & Fixture Production



Spatial Performance & Post-Opening Support

We provide space performance using state-of-the-art digital technologies. In addition to providing operational support such as sales promotion activities, we also offer maintenance, renewal, and renovation services as needed after opening.

- Maintenance
- Sales Promotion & Event Production
- Operation Support
- Space Performance utilizing Digital Technologies

Business Field



Working

We create offices and workspaces that enhance creativity and communication, and showrooms that reflect a company's identity and message.

AGEST Iidabashi Tech center /
AGEST, Inc.

Education

We create educational spaces such as nurseries, schools, universities, etc., as well as libraries and cultural facilities that serve as symbols of the community.

Arao City Library / Arao City



Commerce

We create places with liveliness, where people can gather and communicate, including restaurants, retail shops, services, and commercial and mixed-use facilities, contributing to urban and community development.

top_GREEN SPRINGS /
TACHIHI HOLDINGS Co.,Ltd
bottom_KISARAZU CONCEPT STORE /
Mitsui Fudosan Co., Ltd.



Relaxation

We create healing and relaxation places for mind and body, such as hotels, glamping facilities, hospitals, and healthcare centers.

ISUMI Glamping Resort & Spa SOLAS /
DAINICHI SHOJI K.K.

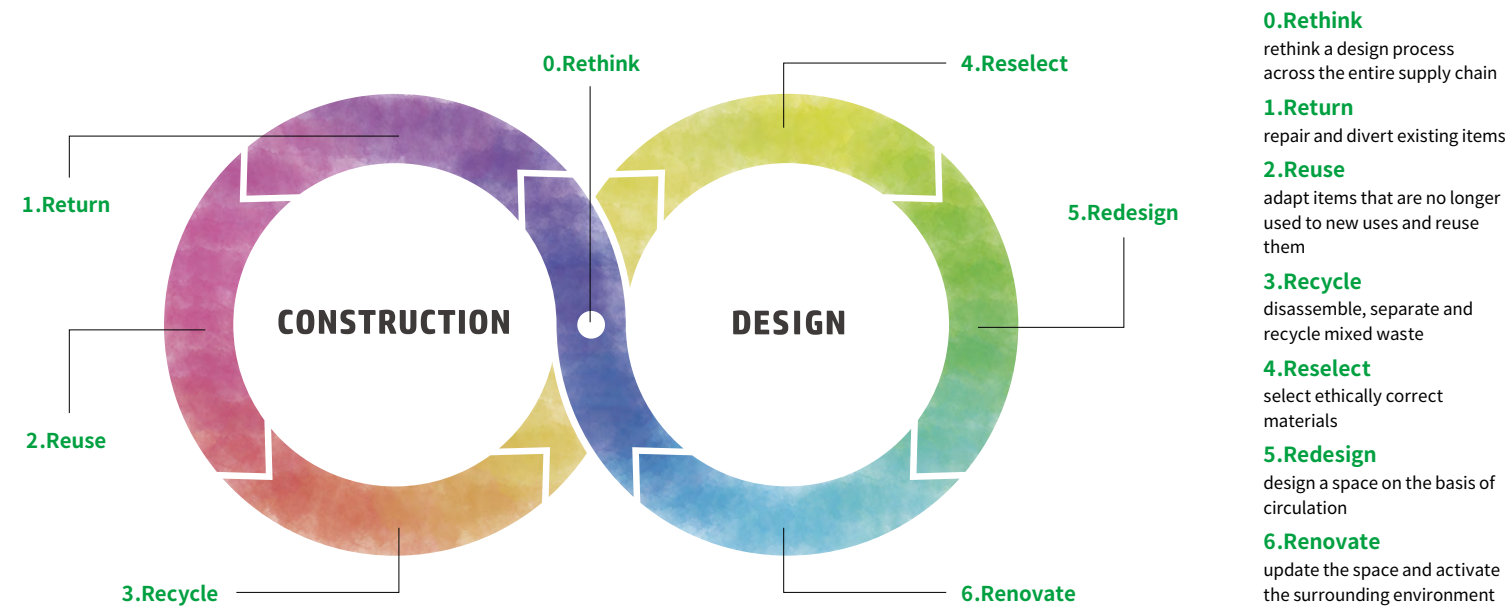
Ethical & Digital

Ethical Design

Ethical Design, that SEMBA defines, is to aim to create a better society across the entire supply chain. We aim to co-create a circular society with ethical partners by creating spaces with a viewpoint of "compassion" for people, local society, and the natural environment.

Circular Renovation®

In the space creation industry, a space is destroyed in a short period of time, and a large amount of waste is generated. Therefore, we propose Circular Renovation®, which can realize a circular economy in the industry, to provide the value of not burdening the earth.



Ethical Material

Rethinking Our Future from Materials

We have gathered information from about 100 manufacturers of building materials and raw materials, and carried out researches into how to recycle at the end of their useful life and utilize recycled resources. We study materials from 4 perspectives, Global Environment, Resource Recycling, People & Society and Creativity & Economical Efficiency, and we have a permanent gallery to showcase Ethical Material in our office.

re product

Exploring Possibilities of Unused Resources

We collect items of no value in society; lumber that is not sawn such as broadleaf tree having bend, and industrial waste discharged from economic activities, and make original products converted.

Zero Waste

Not Wasting Resources

We manage waste discharged from construction in a coordinated way and we are building a network got reuse and recycling. We focus on creating a system of resource recycling, by sorting mixed waste into a material one by one on the site and ensuring traceability after intermediate treatment.

Digital Design

We aim to provide clients and end-users with new digital solutions by creating new value through the utilization our accumulated knowledge of spatial design and BIM data, the core of our DX.



Virtual Simulation

From the design stage, we can share the image of the completed space with all parties involved, it prevents reworks due to miscommunication and aids clients in better decision-making.



Virtual Promotion

We produce videos and virtual contents, utilizing CG and 3D scanning technology to contribute to a space promotion of clients.

About BIM

Unlike the conventional 2D (CAD) design, Building Information Modeling (BIM) is a new design method that can design in 3D and incorporate database into it. SEMBA is a pioneer in utilizing this BIM in the interior design industry.

Network



SEMBA One Asia

With over 30 years of experience, we leverage our established network as the unified SEMBA Group. We strategically set up Asian bases and efficiently share resources among our overseas companies.

SEMBA supports Japanese clients' overseas business expansion in collaboration with our branches and local partners. And we also provide local companies with our services of spatial design.



Tokyo Head Office

We renovated the head office into a Good Ethical Office that is friendly to the earth, people and society. Under the themes of "Hackable Design" and "Ethical Design", we designed the office to create new value by utilizing existing resources through a resource-recycling renovation process.

Japan Network

We have built a nationwide group network to provide flexible and speedy responses and reliable quality.



SEMBA Group

We support our clients with the SEMBA Group as a united force.

SOBI

SOBI CO., LTD.

nonscale

NONSCALE CORPORATION

Osaka Kansai Branch Office

Our Kansai Branch Office with a showroom function embodying SEMBA's Ethical Design. We renovated it with our own service, that minimized waste through resource recycling to achieve a recycling rate of over 90%.



Company Overview

Corporate Name	SEMBA CORPORATION	
Head Office	9F, Seavans South Building, 1-2-3 Shibaura, Minato-ku, Tokyo 105-0023, Japan	
Founded	July 1947	
Established	February 1962	
Capital	JPY 419 million *as of Dec. 31, 2023	
Stock Exchange Listing	Tokyo Stock Exchange Standard Market (securities code: 6540)	
Scope of Business	Spatial design services, including market research & analysis, concept formation, planning & consulting, design, production & construction, space direction using digital technology, maintenance, and facility operation. SEMBA Corporation provides spatial design services for a wide range of clients, from commercial spaces such as large-scale commercial facilities and restaurants, to offices, educational institutions, healthcare facilities, hotels, and leisure facilities, in Japan and five locations worldwide. Based on our mission of “Creating Future Friendly Spaces,” we provide comprehensive support throughout the entire process of spatial design.	
Registration	1.Special Construction License The Minister of Land, Infrastructure, Transport and Tourism (Toku-2) Number 16488 (Interior finishing, building construction, carpentry, scaffolding and earthwork, steel structure construction, painting, plastering, masonry, tiling, bricklaying, and blockwork, glazing, waterproofing, and joinery) 2.First-class Registered Architect Office Tokyo Metropolitan Registration Number 35901 Osaka Prefecture Registration Number (ㄨ)8243 Fukuoka Prefecture Registration Number 1-12772 3.Secondhand Dealer License Tokyo Metropolitan Public Safety Commission Number 301092216088	
Annual Turnover	JPY 24.5 billion in FY2023 (SEMBA Group: 28.9 billion)	
Number of Employees	377 (SEMBA Group Total: 520) *as of Dec. 30,2024	
Trading Banks	Yaesuguchi Branch, Mizuho Bank, Ltd. Yaesudori Branch, UMFG Bank, Ltd.	
Directors	Jun Odagiri	President and CEO
	Hirokazu Kuriyama	Chairperson
	Shigeru Kuriyama	Director in charge of design
	Hiroaki Akiyama	Director and Managing Executive Officer in charge of supervising the corporate departments and overseas business
	Futoshi Kai	Independent Director and Full-time Audit & Supervisory Committee Member
	Mika Matsuo	Independent Director and Audit & Supervisory Committee Member
Senior Executive Officers	Kazumi Shimizu	Independent Director and Audit & Supervisory Committee Member
	Akira Kanbe	General Manager of Eastern Business Department
Executive Officers	Kazuya Takahashi	General Manager of Western Business Department
	Takanori Horita	in charge of overseas business
	Mitsuaki Takeuchi	General Manager of Production Department
	Yutaka Takii	General Manager of BIM Connect Department
	Toyoaki Onoda	Deputy General Manager of Eastern Business Department
	Yoshifumi Anbai	Deputy General Manager of Eastern Business Department
	Daisuke Yokoyama	Deputy General Manager of Western Business Department and Kansai Branch Manager
	Norihiro Takaki	Deputy General Manager of Western Business Department and Kyusyu Branch Manager
Executive Fellows	Norihito Narutomi	Evangelist, Corporate Value X Office and Social Design Port
	Masakazu Fukushima	Director of Ethical Design Lab.

Head Office

9F, Seavans South Building, 1-2-3 Shibaura, Minato-ku, Tokyo 105-0023, Japan

Branch Offices

Hokkaido 6F SE Sapporo Building, 1-1-2 Kitananajyo-nishi, Chuo-ku, Sapporo-city, Hokkaido, 060-0005, Japan

Tohoku 2F Prime Square Hirose-dori Building, 2-9-27 Chuo, Aoba-ku, Sendai-city, Miyagi, 980-0021, Japan

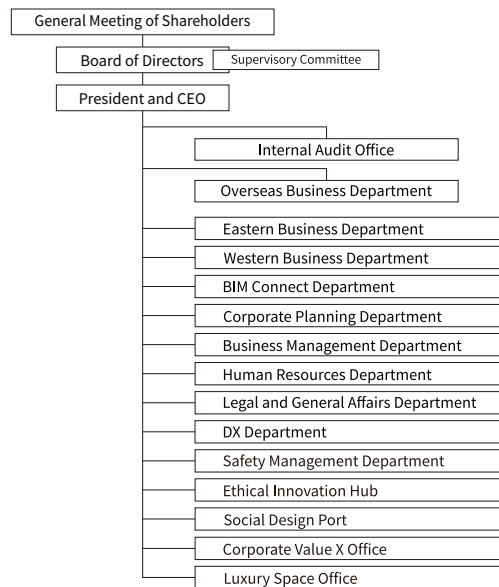
Chubu 1F Orchid Building, 2-38-2 Meieki, Nakamura-ku, Nagoya-city, Aichi, 450-0002, Japan

Kansai 17F Met Life Honmachi Square, 2-5-7 Honmachi, Chuo-ku, Osaka-city, Osaka 541-0053, Japan

Kyusyu 7F Nishinippon-Shimbun Hakata-ekimae Building, 2-6-12 Hakata-ekimae, Hakata-ku, Fukuoka-city, Fukuoka, 812-0011, Japan

Organization

As of 1, 2025



Group Company in Japan

SOBI CO., LTD.

Head Office 9F, Seavans South Building, 1-2-3 Shibaura, Minato-ku, Tokyo, 105-0023, Japan

Tokyo Office Heiwajima Logistics Center 106 3-3-8 Heiwajima, Ota-ku, Tokyo, 143-0006, Japan

Osaka Office 4-7-3, Takaidahondori, Higashiosaka, Osaka, 577-0066, Japan

Izumo Office, Izumo Factory 516-32 Nagahama-cho, Izumo-city, Shimane, 693-0043, Japan

Kumamoto Office, Kumamoto Factory 431-23 Itera, Kashima-machi, Kamimashiki-gun, Kumamoto, 861-3103, Japan

NONSCALE CORPORATION

Head Office #202, 3-3-10 Jingumae, Shibuya-ku, Tokyo 105-0001, Japan

Taiwan Office Room No.1105, Lotus Building, No.136, Sec. 3, Ren Ai Road, Taipei 10657, Taiwan. R.O.C.

KAKUHIRO SEMBA CO., LTD.

1-14-20 Tonyamachi, Aomori-city, Aomori, 030-0131, Japan

KAGOSHIMA SEMBA CO., LTD.

Kozono 2nd Building 2F, 23-21 Uearata-cho, Kagoshima-city, Kagoshima, 890-0055, Japan

OKIJITSU SEMBA CO., LTD.

2F, Paysage Sogenji 1-8-4 Asato, Naha-city, Okinawa, 902-0067, Japan

Group Company outside Japan

TAIWAN SEMBA CO., LTD.

Room No.1105, Lotus Building, No.136, Sec. 3, Ren Ai Road, Taipei 10657, Taiwan. R.O.C.

SEMBA SINGAPORE PTE.LTD.

No.73A Tanjong Pagar Road, SINGAPORE 088494

SEMBA (SHANGHAI) CO., LTD.

Room 801A, 8th Floor, No.167, Jiangning Road, Jing'an District, Shanghai

SEMBA VIETNAM CO., LTD.

3F, Secoin Building, No.9 D2 Street, Saigon Pearl, 92 Nguyen Huu Canh, Ward 22, Binh Thanh Dist., Ho Chi Minh City, VIETNAM

SEMBA MALAYSIA DESIGN & CONSTRUCTION SDN. BHD.

Unit No.A2-8-1 & A2-8-2, SOHO SUITES No.20, Jalan Perak, 50450, Kuala Lumpur, Malaysia



SEMBA CORPORATION

9F, Seavans South Building, 1-2-3 Shibaura, Minato-ku, Tokyo 105-0023, Japan
TEL +81-3-6865-1260 <https://www.semba1008.co.jp/en>

Copyright©2023 SEMBA CORPORATION