

SEMBA Company Profile

SEMBA *Good Ethical
Company*

SEMBA CORPORATION
9F, Seavans South Building, 1-2-3 Shibaura, Minato-ku, Tokyo 105-0023, Japan
TEL +81-3-6865-1260 <https://www.semba1008.co.jp/en> Copyright©2025 SEMBA CORPORATION



Est. 1947

CEO Message



Continuous Pursuit of Borderless Creativity and Innovation

The global situation and economic environment are changing dramatically, and amid increasingly complex social issues worldwide, SEMBA Corporation's true value is being tested. SEMBA corporation was founded as a small, independently operated shop selling display cases in the post-World War II period and has since expanded its business primarily through the design and construction of store interiors and exteriors. Our services have expanded to include offices, schools, public facilities, and hospitality venues. Additionally, for more than 40 years, we have actively focused on international expansion. In recent years, we have ventured into new

challenges from diverse perspectives and across various fields, including Ethical Design, which minimizes environmental, social, and human impact, as well as spatial design in the metaverse. In doing so, we have evolved into a company that creates both physical and digital spaces. Moving forward, building upon the traditional skills and services we have cultivated over many years, SEMBA Corporation will continue its relentless pursuit of creativity and innovation, transcending borders and conventional ideas. Through these efforts, we aim to remain a "Success Partner" to our clients and all our other stakeholders.

Jun Odagiri President and CEO

小田切潤

PHILOSOPHY

Success Partner

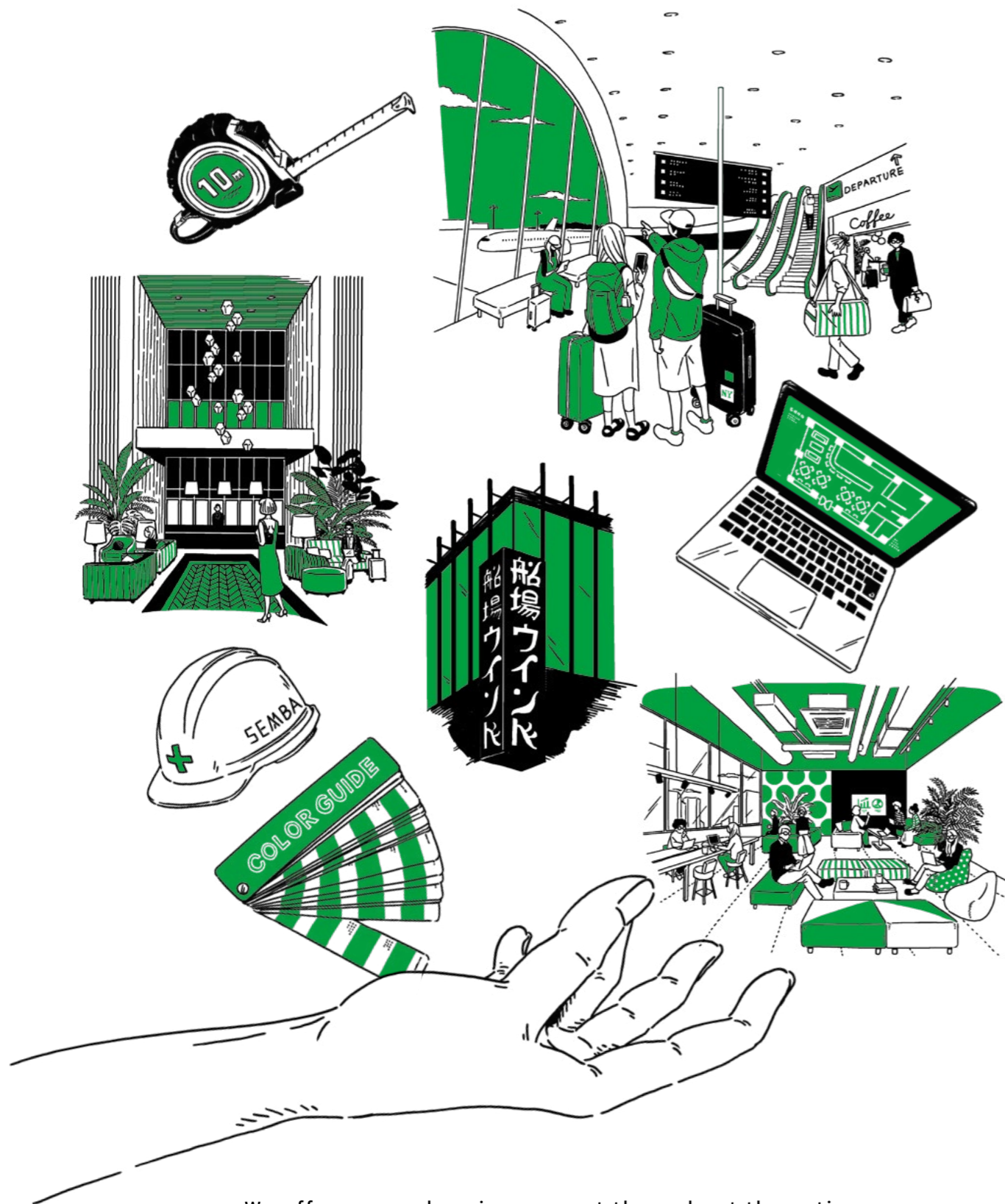
VISION

Good Ethical Company

MISSION

Creating Future Friendly Spaces

Our Service



We offer comprehensive support throughout the entire spatial design process across Japan and internationally.



Research, Planning & Consulting

We conduct market research and analysis to maximize the potential of each location, proposing unique concepts and plans grounded in our expertise.

- Marketing & Research
- Development & Urban Planning Consulting
- Planning & Concept Development
- Branding
- Tenant Leasing
- Sales Promotion & Operational Support

Design

We focus on creating designs that are not only comfortable, functional, and aesthetically pleasing for users but also ethically sound and future-friendly through Ethical Design that considers people, community, and the environment.

- Basic Planning
- Concept Development
- Basic Design & Construction Drawings
- Signage, Logo & Graphic Planning
- Spatial Enhancement (planting, art, displays, etc.)



Production & Construction

In cooperation with partner companies nationwide, we promote safe and reliable construction based on plans and designs with a zero-waste approach that conserves resources.

- Design Supervision
- Construction Management & Site Supervision
- Various types of Construction, Furniture & Fixture Production
- Maintenance



After opening, we proactively propose maintenance, renewals, and renovations.

Ethical and Digital

Ethical Design

Ethical Design, as defined by SEMBA, is to create a better society across the entire supply chain.

As a leader in the spatial design industry where short project cycles often produce significant waste, we are committed to delivering essential value with minimal environmental impact.

CREATION PLACE “BOXX” at THE CAMPUS by KOKUYO Co., Ltd.

A table made from recycled ABS resin lumps
We created a vibrant, large table using ABS resin lumps — solidified resin masses generated during KOKUYO’s manufacturing process. The richly textured tabletop, made by blending ABS resin lumps from both the furniture and stationery divisions, embodies KOKUYO’s commitment to sustainability across its business units.



Ethical Material Rethinking our Future Through Materials

We have gathered information from approximately 100 manufacturers of building and raw materials, and conducted research on recycling methods at the end of life cycles and how to use recycled resources. We study materials from four perspectives: Global Environment, Resource Recycling, People & Society, and Creativity & Economical Efficiency. We also have a permanent gallery to showcase Ethical Materials in our office.



re product Exploring the Potential of Unused Resources

We collect items considered to have no value to society such as unsawn lumber from nonuniform broadleaf trees and industrial waste generated from economic activities, and transform them into original products.

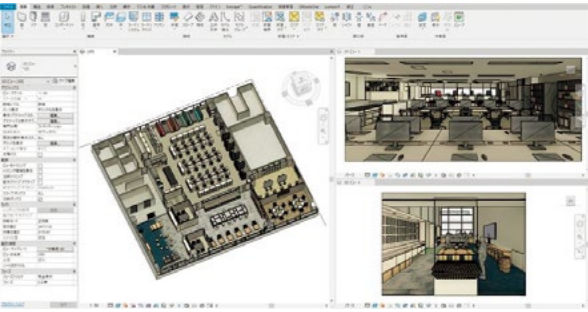


Zero Waste Not Wasting Resources

We are committed to thoroughly sorting waste at construction and demolition sites, striving to reduce mixed waste sent to landfills. To achieve traceability beyond intermediate processing, we are building a nationwide system for resource circulation.

Digital Design

We are focused on building an internal framework to become a pioneer in the spatial design industry through the implementation of BIM (Building Information Modeling), a new workflow system in the construction industry.



Optimization of the design process

By utilizing BIM software that integrates 3D data and component information, we optimize the design process. We are committed to solving our clients' challenges and delivering new value.



Virtual Simulation

By utilizing BIM data created during the design phase, we create virtual spaces that allow anyone, regardless of their expertise in spatial design, to visualize the space. This facilitates smooth consensus-building and helps guide the project to success.



Our Sphere of Business

Business Space

Business spaces are evolving beyond traditional workplaces.
By applying our expertise in creating vibrant commercial environments, we add richness and character to spaces that were once purely functional.

Sumitomo Mitsui DS Asset Management Company, Limited / Toranomon Hills
New Chemical Trading Co., Ltd. / SAINTcity
Mitsui Chemicals, Inc. / Tokyo Midtown Yaesu, Yaezu Central Tower
CARTA HOLDINGS, INC. / TORANOMON HILLS STATION TOWER



Our Sphere of Business



Terminals

We transform public transportation hubs such as train stations and airports into more convenient and comfortable spaces for everyone.

International Arrivals Hall
at Fukuoka Airport /
Fukuoka International Airport Co., Ltd.

Education

We design educational spaces such as nursery schools, primary and secondary schools, universities, and vocational institutions, as well as libraries and cultural facilities that serve as community landmarks.

TOIC NAGOYA / Tokai National Higher Education and Research System



Commerce

We create bustling spaces where people can relax and gather, including restaurants, retail and service stores, and commercial or mixed-use facilities, contributing to urban and community development.

K I T T E OSAKA /
JAPAN POST Co., Ltd.,
JR WEST STATION CITY Co., Ltd.,
JTB Corp.
Hard Rock Cafe Kyoto / WDI Corporation



Other Spaces

We design hospitality facilities such as hotels and *Ryokan* (traditional Japanese inns), public facilities including government offices, and healthcare spaces such as hospitals and wellness centers.

ONSEN&SAUNA YUKULU /
Japanet Holdings Co., Ltd.

Global Network



Offices and business regions

Business regions

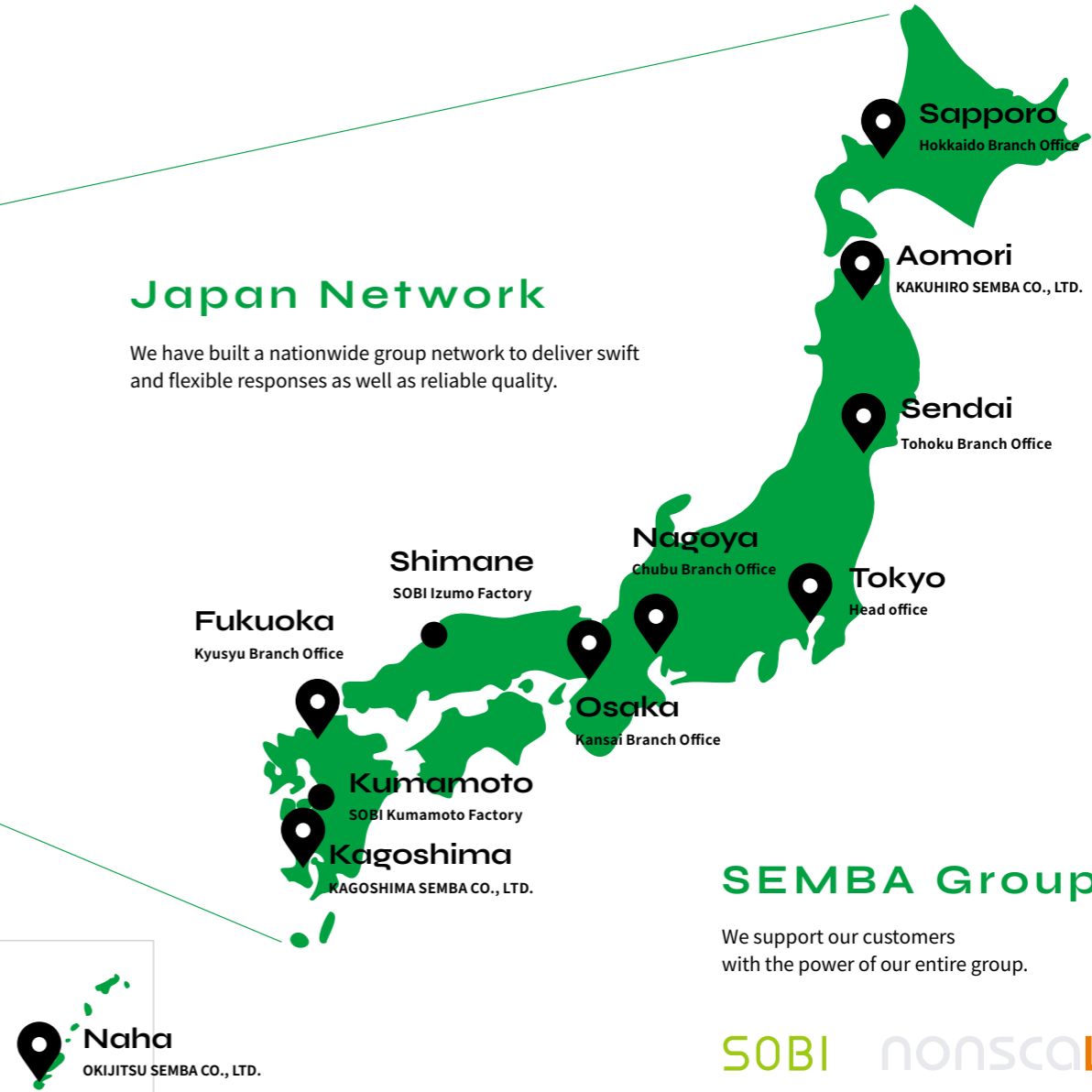
We also provide support outside of our business regions.

SEMBA One Asia

With over 40 years of experience, we leverage our established network as a unified SEMBA Group. We have strategically established Asian bases and efficiently share resources among our international companies. SEMBA supports our clients' business expansion abroad through collaborating with our international branches and local partners. We also provide our spatial design services to local companies.

Japan Network

We have built a nationwide group network to deliver swift and flexible responses as well as reliable quality.



SEMBA Group

We support our customers with the power of our entire group.

SOBI
SOBI CO., LTD.

nonscale
NONSCALE CORPORATION

The story behind the cover “A Lost Gift from the Forest of Hida”

Japan is a country where approximately 70% of the land area is covered by forests, the majority of which are broadleaf. However, small-diameter hardwoods—especially their crooked sections, branches, and bark — are often considered unsuitable for manufacturing. As a result, about 90% of this resource is classified as “unused wood,” typically processed into low-value fuel or paper chips, yielding a limited economic return. To address this challenge within the forestry industry, we reconsidered the unique features of curved wood and tree stumps, regarding them as individual characteristics to be celebrated rather than discarded. Using three pieces of such timbers, we created a product, “A Lost Gift from the Forest of Hida,” which preserves and highlights these natural forms. For the cover design, we carefully extracted the wood grain pattern from the product and transferred it as tactile textures onto the surface. This approach embodies our commitment to Ethical Design and represents a new stage in SEMBA’s evolution.



Company Overview

Corporate Name	SEMBA CORPORATION	
Head Office	9F, Seavans South Building, 1-2-3 Shibaura, Minato-ku, Tokyo 105-0023, Japan	
Founded	July 1947	
Established	February 1962	
Capital	JPY 419 million *as of Dec. 31, 2023	
Stock Exchange Listing	Tokyo Stock Exchange Standard Market (securities code: 6540)	
Scope of Business	Spatial design services, including market research & analysis, concept formation, planning & consulting, design, production & construction, space direction using digital technology, maintenance, and facility operation. SEMBA Corporation provides spatial design services for a wide range of clients, from commercial spaces such as large-scale commercial facilities and restaurants, to offices, educational institutions, healthcare facilities, hotels, and leisure facilities, in Japan and five locations worldwide. Based on our mission of “Creating Future Friendly Spaces,” we provide comprehensive support throughout the entire process of spatial design.	
Registration	1.Special Construction License The Minister of Land, Infrastructure, Transport and Tourism (Toku-2) Number 16488 (Interior finishing, building construction, carpentry, scaffolding and earthwork, steel structure construction, painting, plastering, masonry, tiling, bricklaying, and blockwork, glazing, waterproofing, and joinery) 2.First-class Registered Architect Office Tokyo Metropolitan Registration Number 35901 Osaka Prefecture Registration Number (ㄨ)8243 Fukuoka Prefecture Registration Number 1-12772 3.Secondhand Dealer License Tokyo Metropolitan Public Safety Commission Number 301092216088	
Annual Turnover	JPY 24.5 billion in FY2023 (SEMBA Group: 28.9 billion)	
Number of Employees	377 (SEMBA Group Total: 520) *as of Dec. 30,2024	
Trading Banks	Yaesuguchi Branch, Mizuho Bank, Ltd. Yaesudori Branch, UMFG Bank, Ltd.	
Directors	Jun Odagiri President and CEO Hirokazu Kuriyama Chairperson Shigeru Kuriyama Director in charge of design Hiroaki Akiyama Director and Managing Executive Officer in charge of supervising the corporate departments and overseas business Futoshi Kai Independent Director and Full-time Audit & Supervisory Committee Member Mika Matsuo Independent Director and Audit & Supervisory Committee Member	
Senior Executive Officers	Kazumi Shimizu Independent Director and Audit & Supervisory Committee Member Akira Kanbe General Manager of Eastern Business Department Kazuya Takahashi General Manager of Western Business Department	
Executive Officers	Takanori Horita in charge of overseas business Mitsuaki Takeuchi General Manager of Production Department Yutaka Takii General Manager of BIM Connect Department Toyoaki Onoda Deputy General Manager of Eastern Business Department Yoshifumi Anbai Deputy General Manager of Eastern Business Department Daisuke Yokoyama Deputy General Manager of Western Business Department and Kansai Branch Manager Norihiro Takaki Deputy General Manager of Western Business Department and Kyusyu Branch Manager	
Executive Fellows	Norihiro Narutomi Evangelist, Corporate Value X Office and Social Design Port	

Head Office

9F, Seavans South Building, 1-2-3 Shibaura, Minato-ku, Tokyo 105-0023, Japan

Branch Offices

Hokkaido 6F SE Sapporo Building, 1-1-2 Kitananajyo-nishi, Chuo-ku, Sapporo-city, Hokkaido, 060-0005, Japan

Tohoku 2F Prime Square Hirose-dori Building, 2-9-27 Chuo, Aoba-ku, Sendai-city, Miyagi, 980-0021, Japan

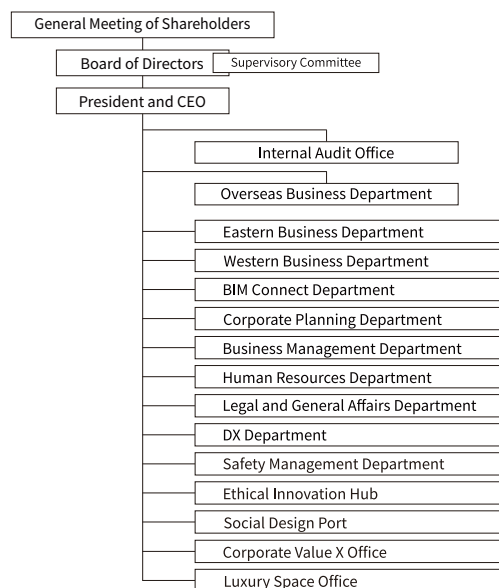
Chubu 1F Orchid Building, 2-38-2 Meieki, Nakamura-ku, Nagoya-city, Aichi, 450-0002, Japan

Kansai 17F Met Life Honmachi Square, 2-5-7 Honmachi, Chuo-ku, Osaka-city, Osaka 541-0053, Japan

Kyusyu 7F Nishinippon-Shimbun Hakata-ekimae Building, 2-6-12 Hakata-ekimae, Hakata-ku, Fukuoka-city, Fukuoka, 812-0011, Japan

Organization

As of 1, 2025



Group Company in Japan

SOBI CO., LTD.

Head Office 9F, Seavans South Building, 1-2-3 Shibaura, Minato-ku, Tokyo, 105-0023, Japan

Tokyo Office Heiwajima Logistics Center 106 3-3-8 Heiwajima, Ota-ku, Tokyo, 143-0006, Japan

Osaka Office 4-7-3, Takaidahondori, Higashiosaka, Osaka, 577-0066, Japan

Izumo Office, Izumo Factory 516-32 Nagahama-cho, Izumo-city, Shimane, 693-0043, Japan

Kumamoto Office, Kumamoto Factory 431-23 Itera, Kashima-machi, Kamimashiki-gun, Kumamoto, 861-3103, Japan

NONSCALE CORPORATION

Head Office #202, 3-3-10 Jingumae, Shibuya-ku, Tokyo 105-0001, Japan

Taiwan Office Room No.1105, Lotus Building, No.136, Sec. 3, Ren Ai Road, Taipei 10657, Taiwan. R.O.C.

KAKUHIRO SEMBA CO., LTD.

1-14-20 Tonyamachi, Aomori-city, Aomori, 030-0131, Japan

KAGOSHIMA SEMBA CO., LTD.

Kozono 2nd Building 2F, 23-21 Uearata-cho, Kagoshima-city, Kagoshima, 890-0055, Japan

OKIJITSU SEMBA CO., LTD.

2F, Paysage Sogenji 1-8-4 Asato, Naha-city, Okinawa, 902-0067, Japan

Group Company outside Japan

TAIWAN SEMBA CO., LTD.

Room No.1105, Lotus Building, No.136, Sec. 3, Ren Ai Road, Taipei 10657, Taiwan. R.O.C.

SEMBA SINGAPORE PTE.LTD.

No.73A Tanjong Pagar Road, SINGAPORE 088494

SEMBA (SHANGHAI) CO., LTD.

Room 801A, 8th Floor, No.167, Jiangning Road, Jing'an District, Shanghai

SEMBA VIETNAM CO., LTD.

3F, Secoin Building, No.9 D2 Street, Saigon Pearl, 92 Nguyen Huu Canh, Ward 22, Binh Thanh Dist., Ho Chi Minh City, VIETNAM

SEMBA MALAYSIA DESIGN & CONSTRUCTION SDN. BHD.

Unit No.A2-8-1 & A2-8-2, SOHO SUITES No.20, Jalan Perak, 50450, Kuala Lumpur, Malaysia